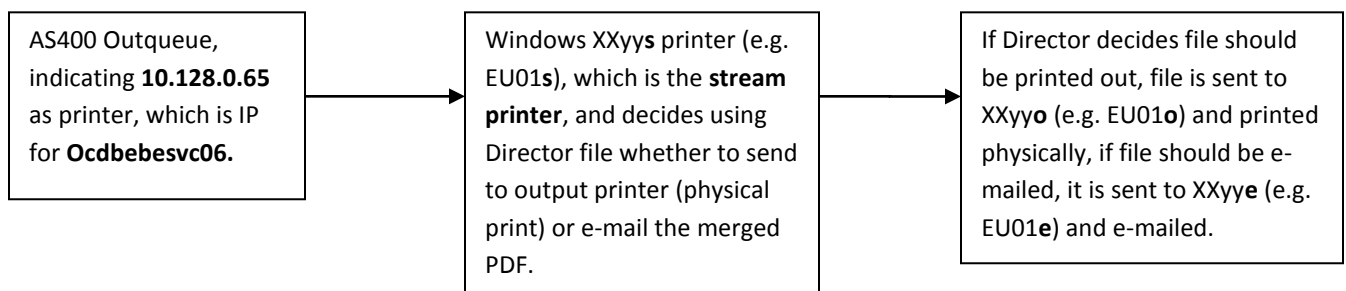


EMEA OCD – Notes for working with Create!Form

Print flow:

Ocdbebesvc06 is the Create!Form Windows server for EMEA OCD. It is currently running Create!Form version 3.

The printing flow from AS400 to the physical printer after merging¹, or sending of merged PDF by email is as follows:



Common problems:

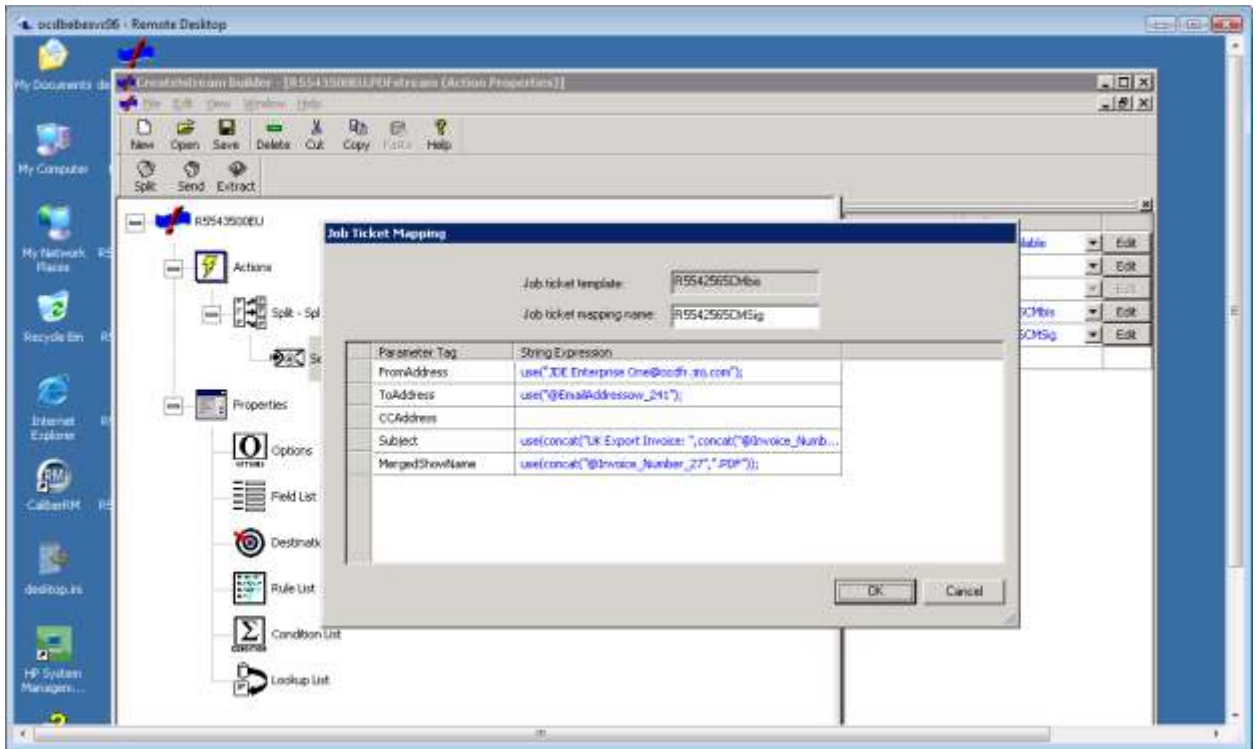
- Sometimes, files will not get printed or e-mailed, and this is due to the second part of the process, involving the stream printer. As you can see in the screenshot below, “Enable Create!Stream processing on this printer” is selected for EU01s in the Create!stream application, and it should be selected at all times if this printer has to merge and decide whether to print or e-mail the PDF.

¹ JDE PDF is processed by the Create!Form application using the established report design found in E:\Createform Data Folders\Workdir

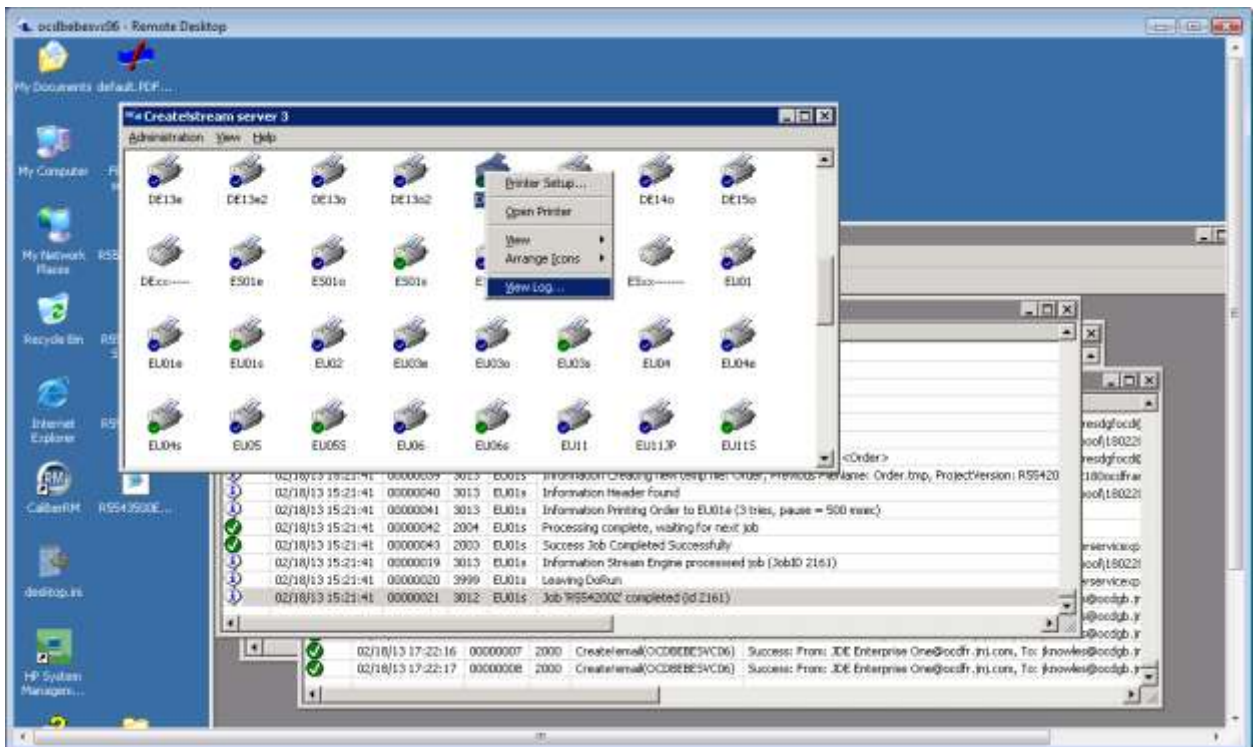


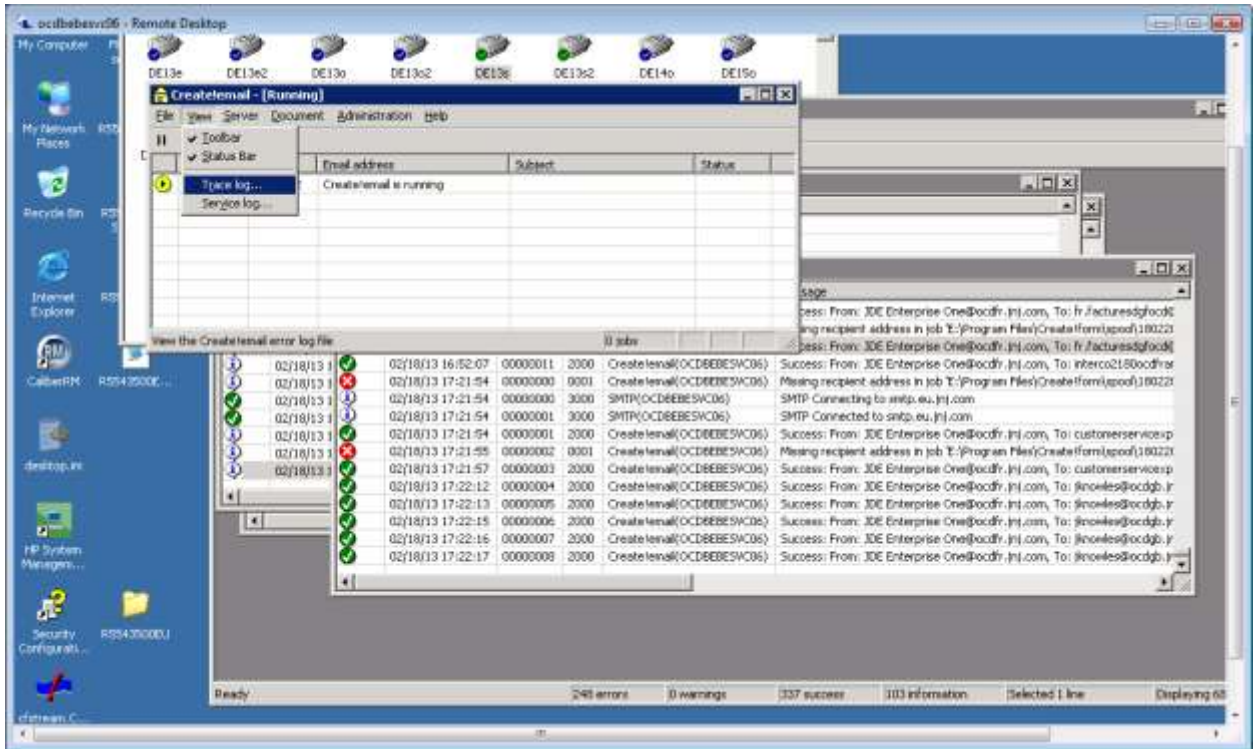
- b) In case a new printer was created, the script directory² chosen should point to the printer's directory for which the new printer was based on. These script directories contain the report scripts (e.g. R5543500EU.PDFstream) with directions which should be followed if Director decides the file should be e-mailed, it creates the e-mail's body from a predefined template and fills in To/From/CC/BCC with report variables and submits it to XXyye (e.g. EU01e) printer for it to handle the automatic sending using Create!Email application.

² E:\Createform Data Folders\scripts



- c) If there are errors occurring, the logs can be consulted for Stream Printer and the E-mail application, as seen below:





The log for the stream printer will show errors that happened during the PDF merge when using the Director project, and the trace log for e-mails will show outgoing e-mails, both successes and errors.