

2018 SCADA Control Team

(The second meeting)

IMPORTANT: *The Team's work is IN PROGRESS. This is simply a report to reflect the Team's activities on this particular meeting day. The Team's proposals may change before end of the process.*

1. Meeting Date and Time: Monday February 18, 2019 4:00p.m

2. Meeting Location: G10 in BEL

3. Meeting numbers:

Dr. Brian Johnson (client)

Hussain Beled (TA)

Kevin King (team number)

Hui Ma (team number)

Ziang Xu (team number)

4.Meeting Participants:

Dr. Brian Johnson (client)

Hussain Beled (TA)

Kevin King (team number)

Hui Ma (team number)

Ziang Xu (team number)

5. Main topics discussed by Team today:

-Next step of the project

-HMI

-Microcontroller

6. Additional questions and information

Hui and James will work on HMI, and Kevin will work on microcontrollers.

SEL- 421 can replace the function of breakers

The distance from the back of RACT to the back of SEL-421 is 50 feet in total

Test RTAC Address: 172.29.81.1

Command:

- a. Set—Close
- b. Clear—Open

The process to add new tags:

- a. Select project folder (421 LAB R135)
- b. Tag processor + add new one (Watch out for the unit (CMV))
- c. Going online and uploading
- d. Import then the ew tags can be used for the HMI

AMPS 0_R135 - SEL AcSElector RTAC

Project: RTAC/Axon-R135
 AMPS_0_R135
 SEL_RTAC

Devices: SEL_2030_Serial, SEL_2030_ENET, SEL_421_SERIA, SEL_3515_SERIA, SEL_3515_ENET, SEL_411s_ENET, SEL_411s_SERIA, SEL_3530_1_SEL, SEL_3515_1_SEL, SEL_421_1_SEL, SEL_411s_1_SEL

Tag Processor: SEL_421_1_SEL, SEL_411s_1_SEL

System: Main Controller, System_Time, Contact I/O, Access Points, Access Point Routers, SMTIP_Router, User Logic, LabAlarms, SendMail, Date_Time, GVL1, Mal_Message, Virtual Tag Lists, DO1, SEL_734_1_SEL

History - New Event

Enable	Tag Name	Tag Type	Device Label	Device Bit Label	Tag Alias	Device Label Instance	Device Bit Label Instance	Status Val.
False	SEL_421_1_SEL_PM_INST_B1	CMV	IB1			0	0	
False	SEL_421_1_SEL_PM_INST_B2	CMV	IB2			0	0	
False	SEL_421_1_SEL_PM_INST_B3	CMV	IB3			0	0	
False	SEL_421_1_SEL_PM_INST_BRC	CMV	IBC			0	0	
False	SEL_421_1_SEL_PM_INST_IC1	CMV	IC1			0	0	
False	SEL_421_1_SEL_PM_INST_IC2	CMV	IC2			0	0	
False	SEL_421_1_SEL_PM_INST_IC3	CMV	IC3			0	0	
False	SEL_421_1_SEL_PM_INST_ICA	CMV	ICA			0	0	
False	SEL_421_1_SEL_PM_INST_PA...	MV	PA_WATTS			0	0	
False	SEL_421_1_SEL_PM_INST_PB_W...	MV	PB_WATTS			0	0	
False	SEL_421_1_SEL_PM_INST_PC...	MV	PC_WATTS			0	0	
False	SEL_421_1_SEL_PM_INST_P_W...	MV	P_WATTS			0	0	
False	SEL_421_1_SEL_PM_INST_QA_V...	MV	QA_VARS			0	0	
False	SEL_421_1_SEL_PM_INST_QB_VARS	MV	QB_VARS			0	0	
False	SEL_421_1_SEL_PM_INST_QC_V...	MV	QC_VARS			0	0	
False	SEL_421_1_SEL_PM_INST_Q_VARS	MV	Q_VARS			0	0	
False	SEL_421_1_SEL_PM_INST_VO	CMV	VO			0	0	
False	SEL_421_1_SEL_PM_INST_V1	CMV	V1			0	0	
False	SEL_421_1_SEL_PM_INST_V2	CMV	V2			0	0	
True	SEL_421_1_SEL_PM_INST_VA	CMV	VA			0	0	
False	SEL_421_1_SEL_PM_INST_VAB	CMV	VAB			0	0	
True	SEL_421_1_SEL_PM_INST_VB	CMV	VB			0	0	
False	SEL_421_1_SEL_PM_INST_VBC	CMV	VBC			0	0	
True	SEL_421_1_SEL_PM_INST_VC	CMV	VC			0	0	
False	SEL_421_1_SEL_PM_INST_VCA	CMV	VCA			0	0	

REC 61131: Build

Memory area 0 contains Data and Code: size: 1106946 bytes , highest used address: 851420, largest contiguous memory gap: 255426 bytes (23 %)
 Memory area 1 contains Retain Data: size: 28648 bytes , highest used address: 0, largest contiguous memory gap: 28648 bytes (100 %)
 Build complete -- 0 errors, 0 warnings : ready for download!

AMPS 0_R135 - SEL AcSElector RTAC

Project: RTAC/Axon-R135
 AMPS_0_R135
 SEL_RTAC

Devices: SEL_2030_Serial, SEL_2030_ENET, SEL_421_SERIA, SEL_3515_SERIA, SEL_3515_ENET, SEL_411s_ENET, SEL_411s_SERIA, SEL_3530_1_SEL, SEL_3515_1_SEL, SEL_421_1_SEL, SEL_411s_1_SEL

Tag Processor: SEL_421_1_SEL, SEL_411s_1_SEL

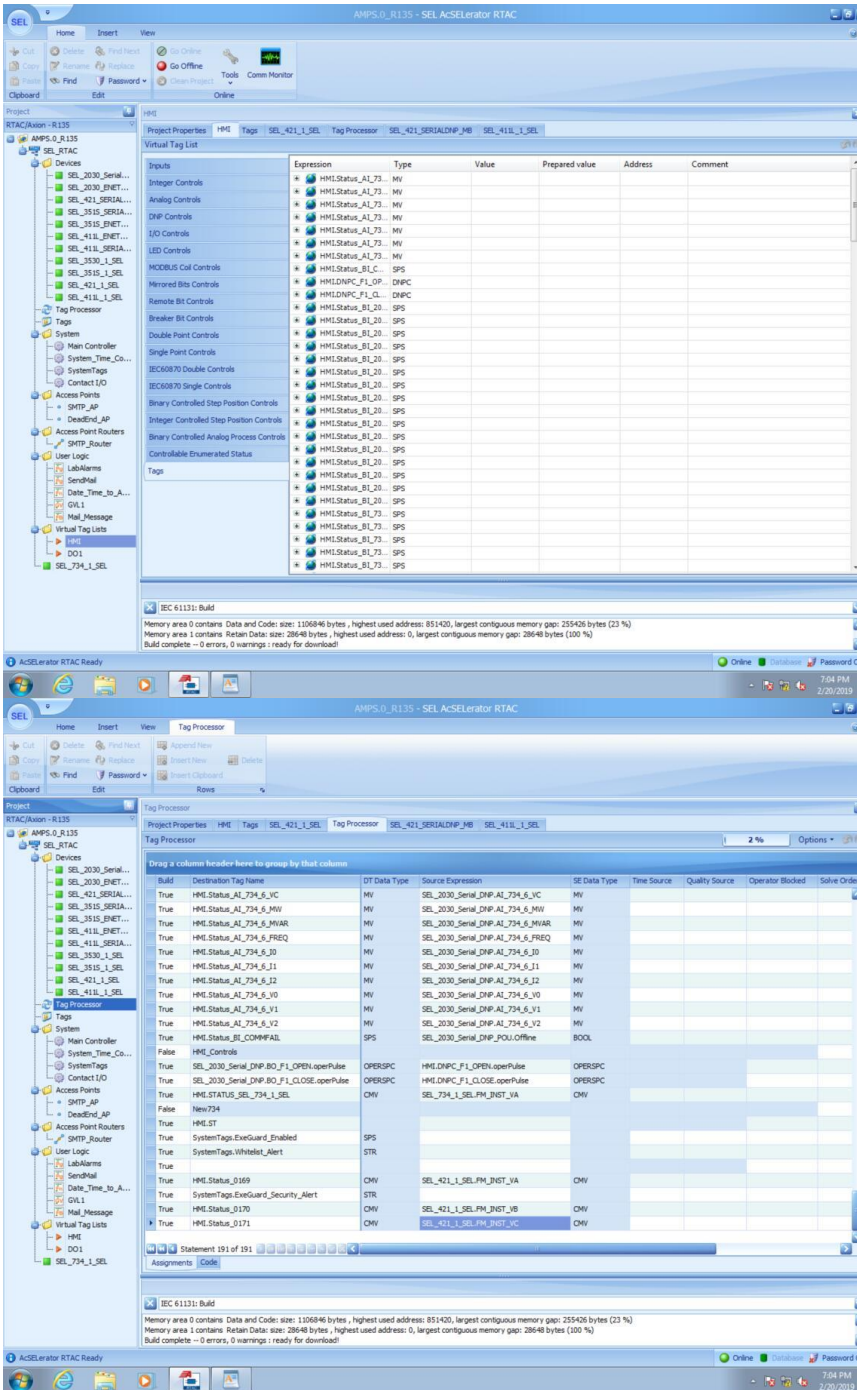
System: Main Controller, System_Time, Contact I/O, Access Points, Access Point Routers, SMTIP_Router, User Logic, LabAlarms, SendMail, Date_Time, GVL1, Mal_Message, Virtual Tag Lists, DO1, SEL_734_1_SEL

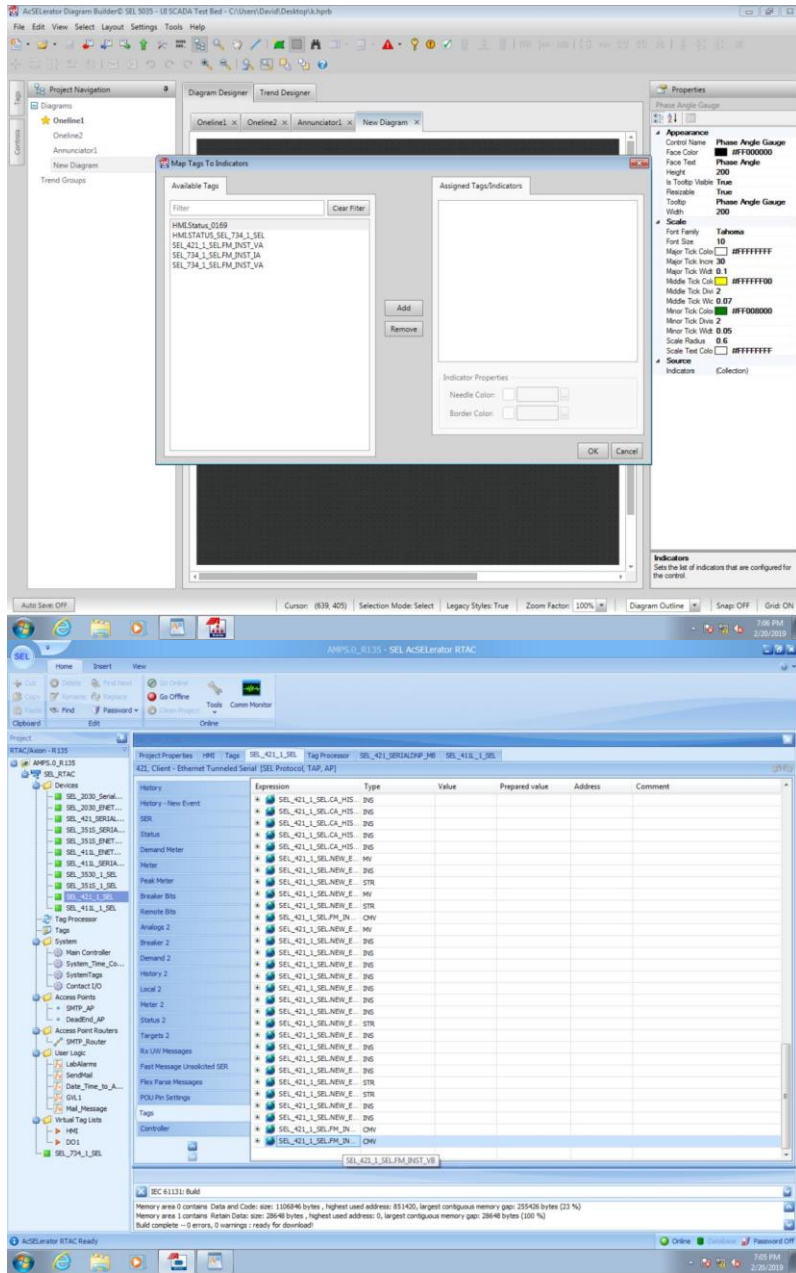
Virtual Tag List

Enable	Tag Name	Tag Type	Tag Alias	Status Value	Inst Magnitude	Magnitude	Deadband	Zero Deadband	Max Value	HH
True	HME.Status_AL_734_S_J2	MV			0	0	100	2	2e+37	
True	HME.Status_AL_734_S_V0	MV			0	0	100	2	2e+37	
True	HME.Status_AL_734_S_V1	MV			0	0	100	2	2e+37	
True	HME.Status_AL_734_S_V2	MV			0	0	100	2	2e+37	
True	HME.Status_AL_734_S_JA	MV			0	0	100	2	2e+37	
True	HME.Status_AL_734_S_JB	MV			0	0	100	2	2e+37	
True	HME.Status_AL_734_S_JC	MV			0	0	100	2	2e+37	
True	HME.Status_AL_734_S_JA	MV			0	0	100	2	2e+37	
True	HME.Status_AL_734_S_JC	MV			0	0	100	2	2e+37	
True	HME.Status_AL_734_S_VB	MV			0	0	100	2	2e+37	
True	HME.Status_AL_734_S_VC	MV			0	0	100	2	2e+37	
True	HME.Status_AL_734_S_MW	MV			0	0	100	2	2e+37	
True	HME.Status_AL_734_S_MVAR	MV			0	0	100	2	2e+37	
True	HME.Status_AL_734_S_FREQ	MV			0	0	100	2	2e+37	
True	HME.Status_AL_734_S_J0	MV			0	0	100	2	2e+37	
True	HME.Status_AL_734_S_J1	MV			0	0	100	2	2e+37	
True	HME.Status_AL_734_S_J2	MV			0	0	100	2	2e+37	
True	HME.Status_AL_734_S_V0	MV			0	0	100	2	2e+37	
True	HME.Status_AL_734_S_V1	MV			0	0	100	2	2e+37	
True	HME.Status_AL_734_S_V2	MV			0	0	100	2	2e+37	
True	HME.STATUS_SEL_734_1_SEL	CMV			0	0	100	2	2e+37	
True	HME.Status_0166	SPS		False						
True	HME.Ou01	SPS								
True	HME.Status_0169	CMV			0	0	100	2	2e+37	
True	HME.Status_0170	CMV			0	0	100	2	2e+37	
True	HME.Status_0171	CMV			0	0	100	2	2e+37	

REC 61131: Build

Memory area 0 contains Data and Code: size: 1106946 bytes , highest used address: 851420, largest contiguous memory gap: 255426 bytes (23 %)
 Memory area 1 contains Retain Data: size: 28648 bytes , highest used address: 0, largest contiguous memory gap: 28648 bytes (100 %)
 Build complete -- 0 errors, 0 warnings : ready for download!





Next meeting would be held in G10 of Buchanan Engineering Lab on March 04, 2019 4pm.