



Team Members:

Delaney Fitzgerald

Blakely Frechette

Gabriel Hasenoehrl

Irven Perez

Machine shop
website scheduler



SPONSOR

University of
Idaho
Mechanical
Engineering

**OBJECTIVE
STATEMENT**

To facilitate the ability to connect students and faculty to school resources.

ROOT PROBLEM

GOAL:

- To create a clean and functional design for ME machinery usage and billing scheduling system.
- A calendar scheduling system for students to request time at specific machines.

CLIENT NEEDS

Major Tasks:

Create a Welcome Page with Calendar Viewer Machine:

+600 Users must be able to access the landing page and the ability to see the current calendar.

Add a login and Authentication Page:

+600 Users must be able to login with their school credentials to make a reservation.

Basic adding of machines:

Ability to add and delete machine units from the machine list.

Calendar Database Setup:

Ability to hold data that's associated with the calendar.

Calendar Database Interaction:

Configure database to retain the most recent data regarding the scheduling system.

Add billing and notification system:

Send a notification to billing offices with the required information

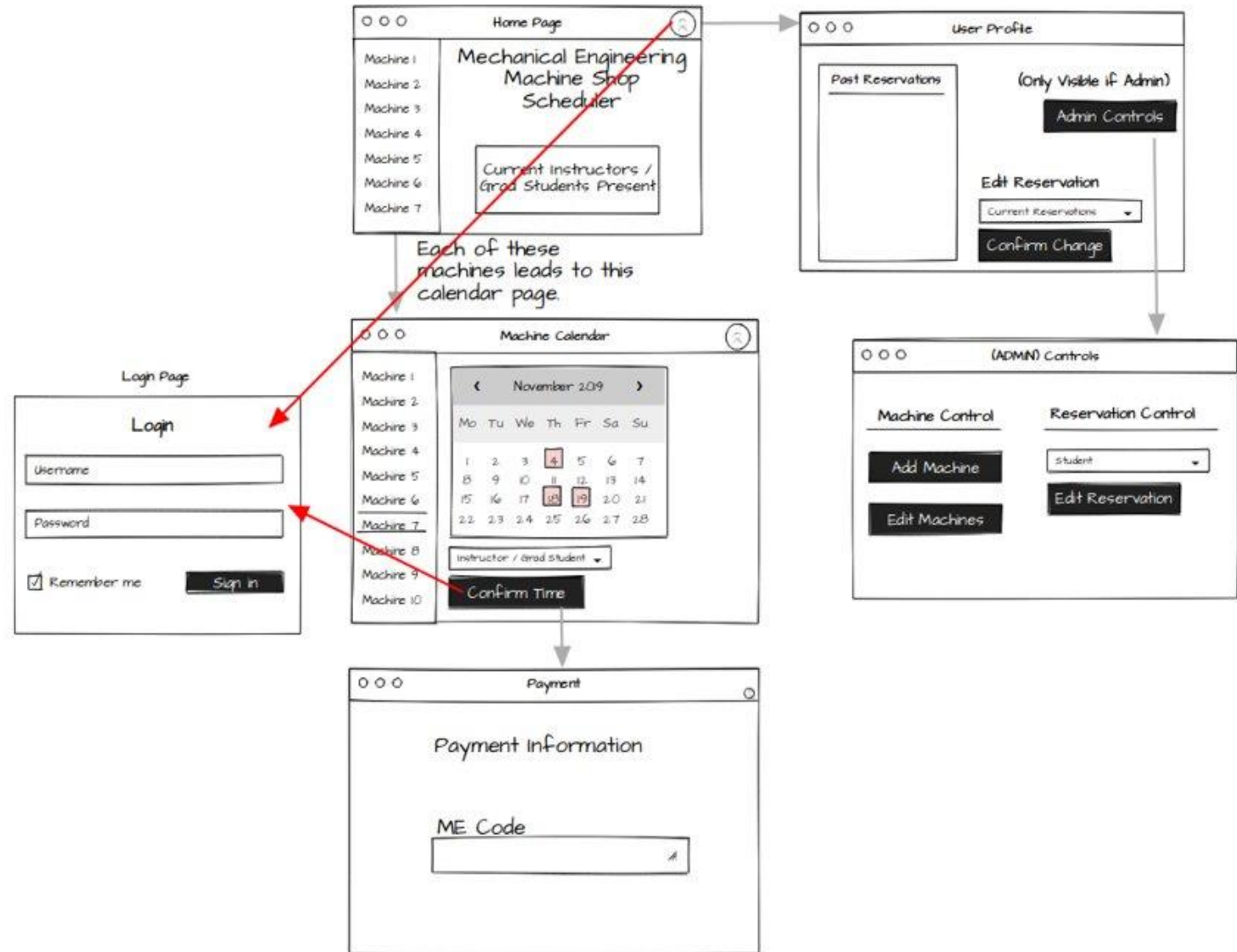
Login Profiles and Privileges Functionality:

Able to create profiles for admin, manager, & users.

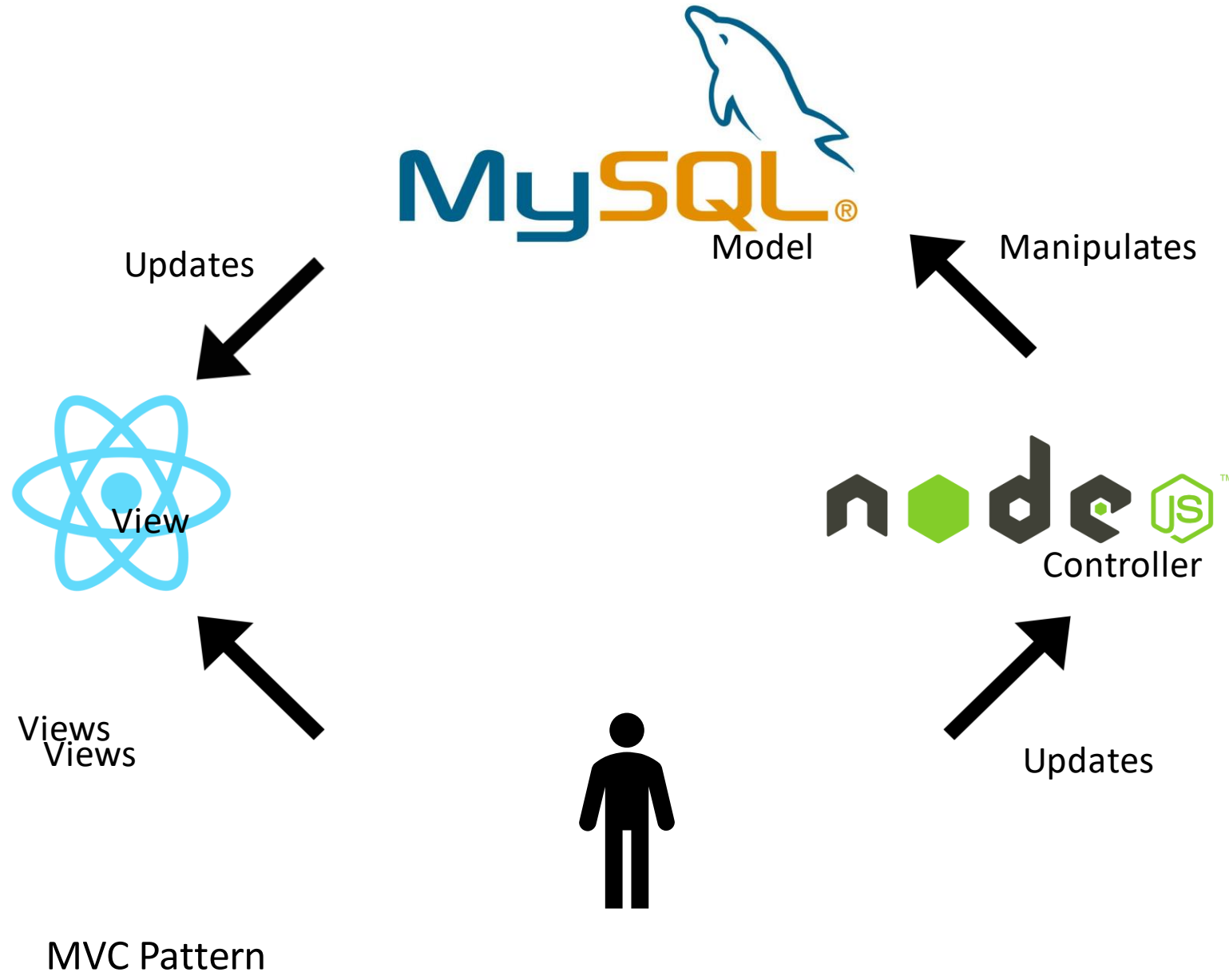
Login Authentication Functionality:

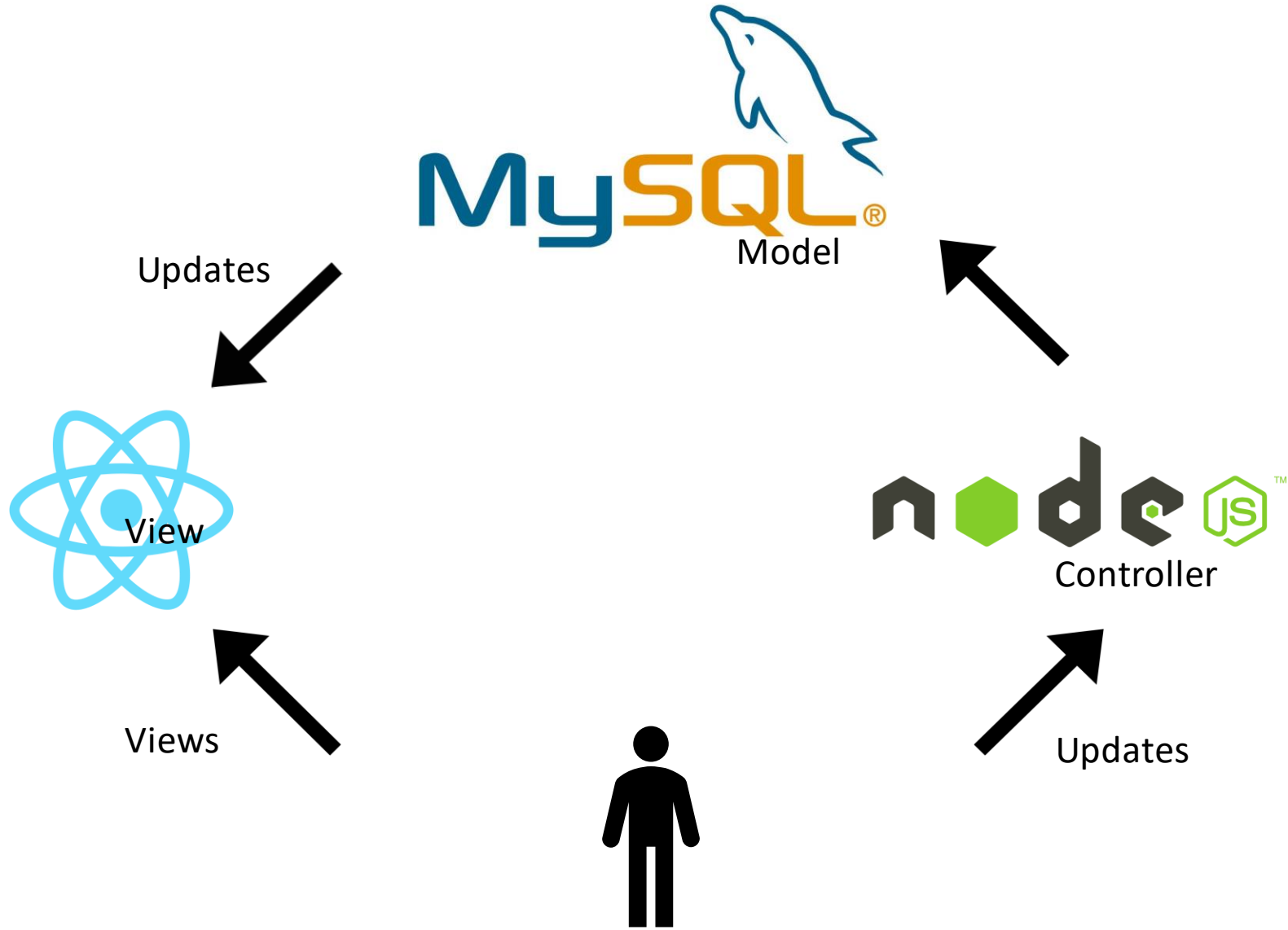
Able to correctly validate users' credentials.

Design



Project Learning





MVC Pattern

SCHEDULE

TASKS	DATES
Initial Setup of Webpage	11/22/2019
Viewer Machine Calendar and Welcome Page	12/01/2019
Login and Authentication Page	12/13/2019
Basic adding of Machines	12/20/2019
Calendar Database Setup	12/31/2019
Calendar Database Interaction	1/15/2020
User Scheduling Database Interaction	2/07/2020
Add Billing System	2/21/2020
Login Profiles and Privileges Functionality	3/01/2020
Login and Authentication Functionality	3/16/2020

BUDGET

Expense Items	2019/2020							
	Sept	Oct	Nov	Dec	Jan	Feb	Mar	Apr
Equipment/Tools:	-	-	-	-	-	-	-	-
N/A	-	-	-	-	-	-	-	-
Travel:	-	-	-	-	-	-	-	-
N/A	-	-	-	-	-	-	-	-
Supplies / Parts / Services:	-	-	-	-	-	-	-	-
N/A	-	-	-	-	-	-	-	-
Shop Usage (est. Hrs):	-	-	-	-	-	-	-	-
N/A	-	-	-	-	-	-	-	-

Item Total			
Equipment/Tools	\$ -		
Travel	\$ -		
Supplies / Parts / Services	\$ -		
Shop Usage (est. Hrs)	\$ -		
		\$ -	Expenses Subtotal
Graduate Student Support	\$ -	Including fringe	
Shop Overhead	\$ -		
University Overhead	\$ -	5% of all expenses	
Totals	\$ -	\$ -	\$ -
		Budget	Excess