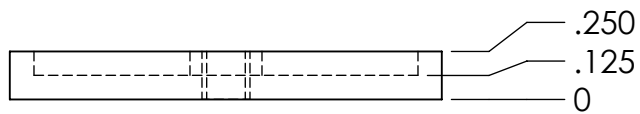
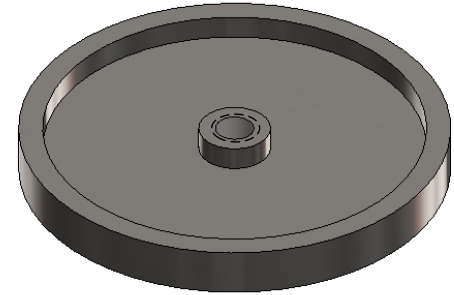
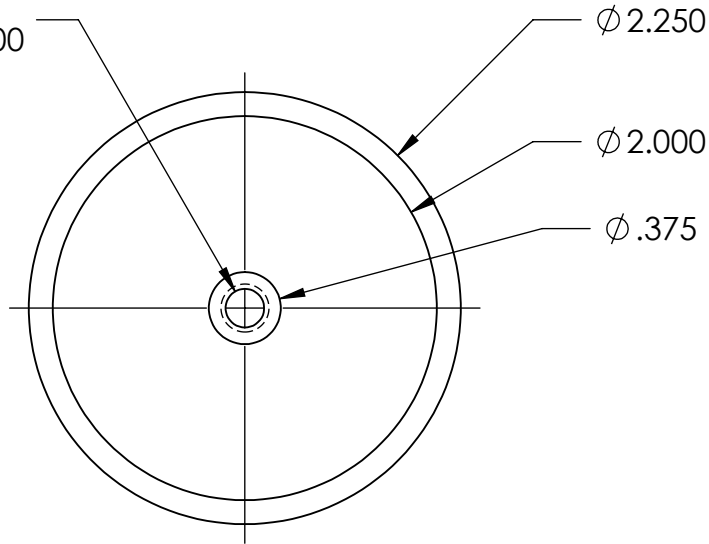


$\phi$  .201  $\nabla$  .750  
 1/4-20 UNC  $\nabla$  .500



|   |   |  |                |                                      |            |
|---|---|--|----------------|--------------------------------------|------------|
| <b>PROPRIETARY AND CONFIDENTIAL</b><br>THE INFORMATION CONTAINED IN THIS DRAWING IS THE SOLE PROPERTY OF UNIVERSITY OF IDAHO, ME DEPARTMENT. ANY REPRODUCTION IN PART OR AS A WHOLE WITHOUT THE WRITTEN PERMISSION OF UNIVERSITY OF IDAHO, ME DEPARTMENT IS PROHIBITED. |   | DIMENSIONS ARE IN INCHES<br>THIRD ANGLE PROJECTION |                | Load Cell                            |            |
| DEFAULT TOLERANCES:   |   | DESCRIPTION: Load Cell Bottom                      |                | UNIVERSITY OF IDAHO<br>ME DEPARTMENT |            |
| LINEAR:<br>X. $\pm$ .25<br>X.X $\pm$ .1<br>X.XX $\pm$ .01<br>X.XXX $\pm$ .002   | ANGULAR:<br>X. $\pm$ 2<br>X.X $\pm$ 1<br>X.XX $\pm$ 0 30' | CHECKED BY: XXXXXXXXXXXX                           | DATE: XX/XX/XX | PART #: 01-02                        | QTY: 1     |
| MATERIAL: AISI 304  |   | DRAWN BY: Luke Nelson                              |                | DATE: 4/24/2014                      | SCALE: 1:1 |
|   |   | FILE NAME: Load Cell Bottom.SLDPRT                 |                | SHEET: 1 OF 1                        |            |