

MINUTES: (CAPTURE MAIN POINTS FOR EACH AGENDA ITEM)

* Lap equipment check:

* Power source

Abstract:

* Solar: High watt.

450w

need to know the capacity

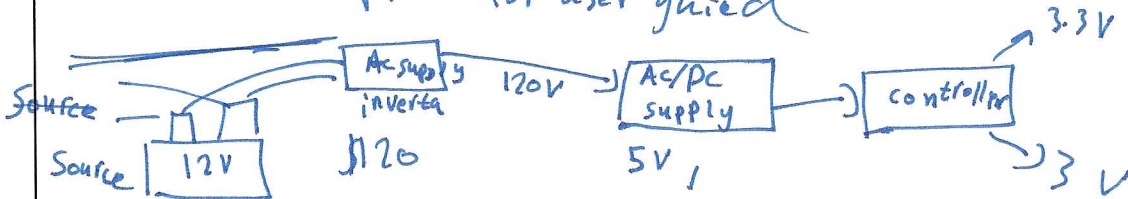
↳ Hydro: - the ^{high} low Head the ~~high~~ low Volume

- the power requirements

- total production

- Start from the back into begining.

* back plan for user guided



* efficiency is important

* designed back up power

* 2 power supply or more

* Transport → instal

* 2 product line

* No road blocks

old ups

from

rip

min - battery storage

\$15

without battery

more money more accuracy

Control:

depend on sensor

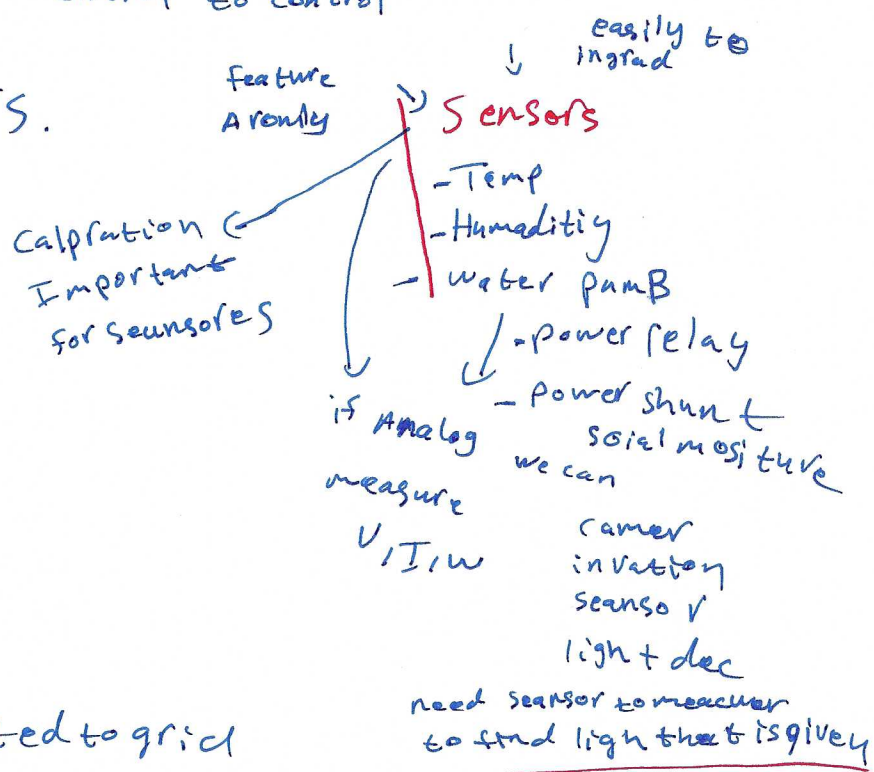
- * Sensor for additno
- * Analog Auto-matic
- * if going Comarcial
- * cheaper
- * Less GB
- * power off lose code

- note:
- * hard to build
- * if use java less efficant
- * no need flash memory
- * Privat server
- * 4 GB
- * power off lose code
- * Camera Camled

pi zero => \$14
 Pi 3 => \$40
 Pico => \$35

we can change or send from control to control

it depends on the sensors.



old product example:

- power meter
- relays
- power cord from AC connected to grid
- power supply → raspberry pie → USB
- Header ←
 - 4 relays → power
 - ↓
 - AC or DC
- Sensors
- Temp and humidity, Soil
- app

if product work add more too it.

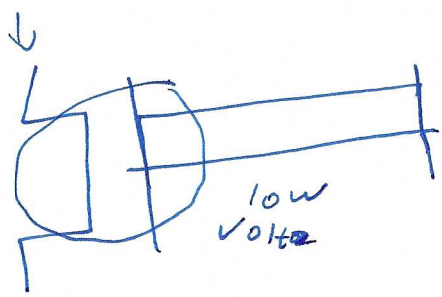
one problem:

power deppan in the relays Holding Power
 coil inductor
 old fasihoned

ros_e { The amount power hold & power in relay
 it can over power for control

Solution:

- Mosft



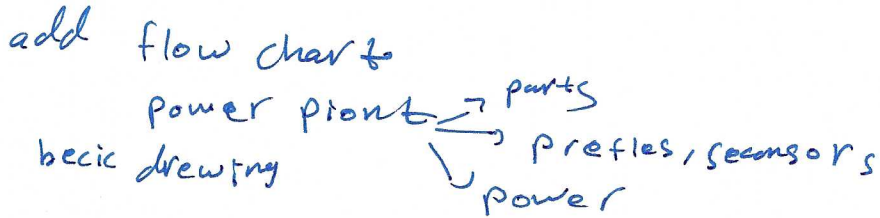
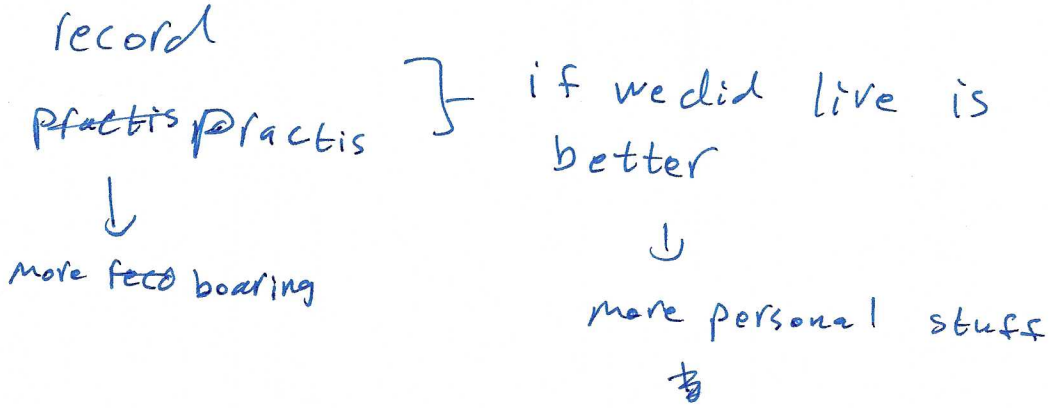
it can be burned
if I was High

light

List of supply:

- light
- fan
- etc

Snapshot 1



Snapshot?????

we have enough equipment to do control ~~test~~ → Kim test
 do energy measure → Abdul
 ↳ Clif
 ↳ Suhail

a stand fan really power factor 70%
 motor is really bad

thermal control

pie will give us wired graph
 because drop of power

It ~~am~~ we → if using solar is important.
 room temp - then
 firs ↓

Suhail, Cliff:

- Inverter → \$ > 0
- Ac/Dc supply →
- batteries LI → 25\$ → L Ds fruit

Ab

Rim:

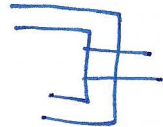
- controller
- heat
- power
- sensor

Abdul:

- \$ Solar panels, size
- \$ Hydro generator

General

- wire
 - connectors / water proof
 - fan 15V
- for inclosure design



we should expect a drop for solar energy - order it to work for 4 → 5 h when is off send a text to ~~me~~ trip