

INTERACTIVE KIOSK FOR COLLEGE OF ENGINEERING

Team Phoenix:

Adonay Berhe, Kevin Benzing,
Richard Boss



THE PROBLEM

Engineering buildings lack a centralized
information hub!



THE PROBLEM



Who has an office?

What classrooms can be found?

Where are these offices and classrooms?

What events related to the COE are happening?



INTERACTIVE TOUCHSCREEN KIOSK

“The Portal to All of Engineering”
- Rob Patton



Interactive Kiosk for
College of Engineering

University of Idaho
College of Engineering

WHAT INFORMATION DO WE WANT?

Historical
Background

Staff
Directory

Interactive
Map

Focus Areas:
ThinkTank,
CSAC, etc.

Promotional
Videos for the
College

Upcoming
events

Engineering
Club Activities





Featured Videos



March 2nd,
2017

12:50pm

Next Event

NSBE Lecture
March 2nd

Weather

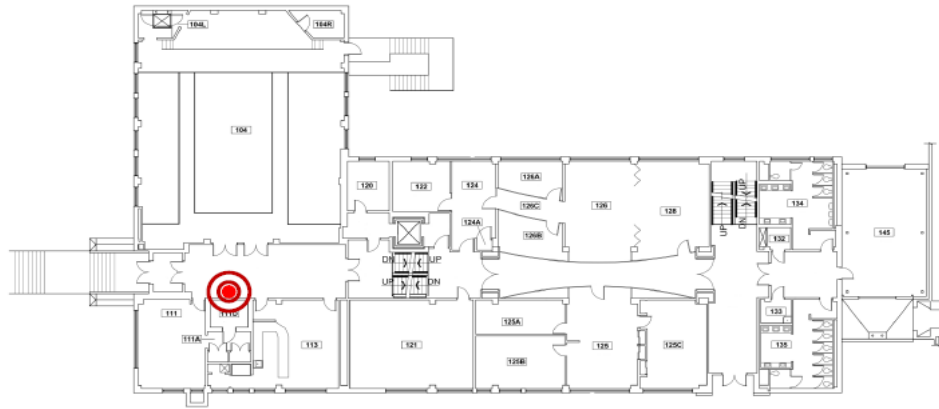


29°F





University of Idaho



JANSSEN ENGINEERING BUILDING - #028

FIRST FLOOR

01/29/2016

0 12.5' 25' 50'
SCALE: 1" = 25'-0"

Directory

Alves-Foss, Jim	225
Bolden, Bruce	232
Conte de Leon, Daniel	233
Donohoe, Gregory	324
Foster, James A.	441E
Heckendorn, Robert	226
Jamil, Hasan	236
Jeffery, Clint	230
Krings, Axel	320
Ma, Marshall (C)	337
Rinker, Robert	335

Tap an entry in
the Directory to
see directions.



PRODUCT SUPPLIER

- Offer start to finish solutions for digital signage
 - ❑ Content Manager – Development
 - ❑ Content Player – Display
- System solutions – Touchscreen monitors, computers
- Database to manage signs
- Remote deployment and updating



SPECIFICATIONS

General Requirement	Specific Requirement	Implementation
Map of building	Have a directory offices, rooms, etc. of the building and show a route to the location on a map.	Use Wayfinding with directory
About the building	Have information about the history of the building and what its purpose is.	Have a section where users can read up on the history of the building and about what it offers
Useful information	Populate the kiosk with useful and relevant information for a range of audiences.	Discern what information various groups would find useful, then acquire and display it
Security	Ensure that the kiosk cannot be tampered with in a way that would compromise it or other machines.	Hide the computer out of reach and have the kiosk on its own subnet
Maintainability	In the interest of future parties, design it in such a way that others will be able to learn to maintain it.	Polish final product to near perfection, provide as much documentation as possible



SPRING 2017 DESIGN GOALS

- Implement a fully functioning interactive kiosk mounted on wall.
- Detailed Documentation!
- Target Goals:
 - Faculty and staff directory with office locations
 - Interactive map (Wayfinder)
 - RSS Feed of COE and other related websites
 - History and Current Events catalog



SPRING 2017 DESIGN GOALS

- Reach Goals:
 - ❖ Centralized website for clubs/orgs/admins to submit and update content.
 - ❖ Scripts for storing input files and sorting according to expiration dates.
- (Maintenance)



RISK MANAGEMENT

- Remove potential security risks and unnecessary software from PC.
- Account for other locations in JEB building.
- Develop defensively
 - Document, document, document
 - Implement, test, learn, re-implement more cleanly
 - Review each other's contributions

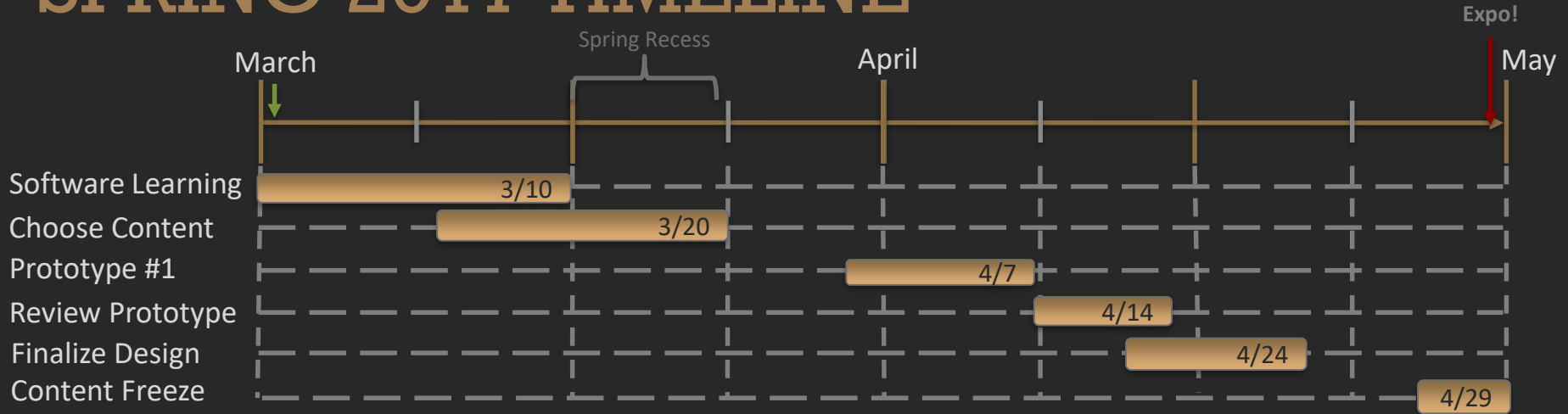


POTENTIAL PROBLEMS

- Time constraint
- Deployment coincides with construction
- Maintainability



SPRING 2017 TIMELINE



INTERACTIVE KIOSK FOR COLLEGE OF ENGINEERING

QUESTIONS? COMMENTS?

Team Phoenix:

Adonay Berhe, Kevin Benzing,
Richard Boss



Interactive Kiosk for
College of Engineering

University of Idaho
College of Engineering