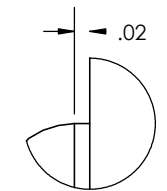
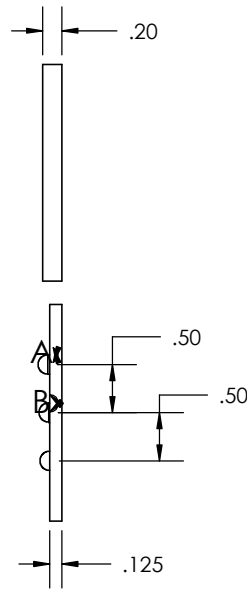
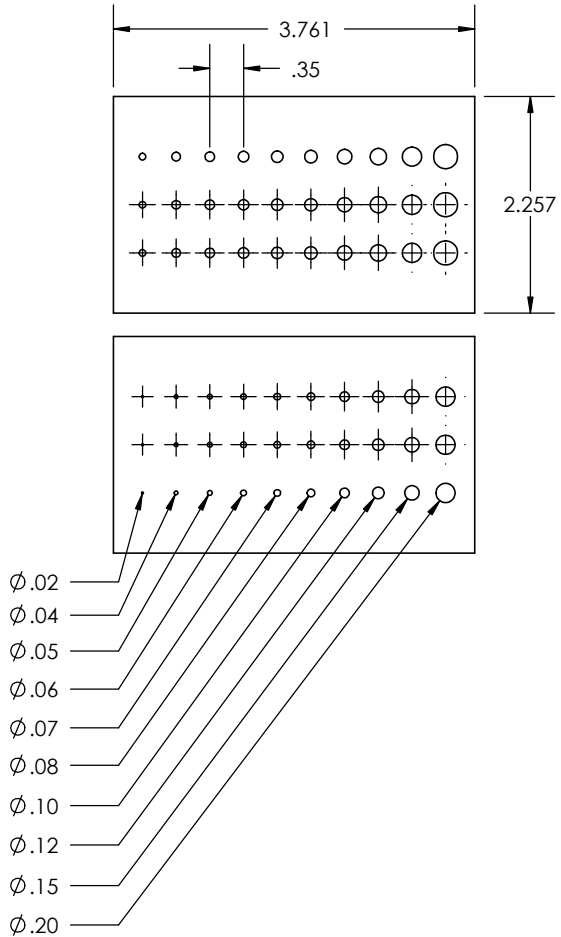
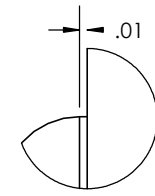


ITEM NO	PART NUMBER	DESCRIPTION	MATERIAL	VENDOR	VENDORN
1	SP-00_ITP	Test print for indentation and detail	PLA	-	-

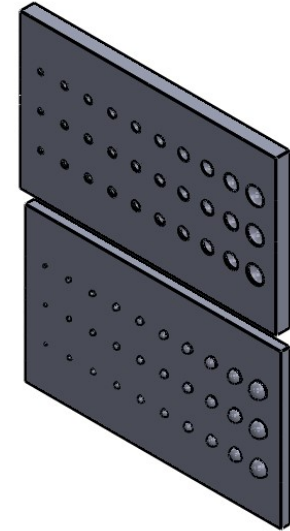
REVISIONS				
Rev	Description	DrawnBy	CheckedBy	Date
A	Initial Release	ARN		6/18/2020



DETAIL A
SCALE 4 : 1



DETAIL B
SCALE 4 : 1



NOTES:

1. Intended to be printed on a 3D printer with PLA. Design includes a 0.3% shrink rate
2. Cavity side has a 0.025" clearance

PROPRIETARY AND CONFIDENTIAL THE INFORMATION CONTAINED IN THIS DRAWING IS THE SOLE PROPERTY OF UNIVERSITY OF IDAHO, ME DEPARTMENT. ANY REPRODUCTION IN PART OR AS A WHOLE WITHOUT THE WRITTEN PERMISSION OF UNIVERSITY OF IDAHO, ME DEPARTMENT IS PROHIBITED.		DIMENSIONS ARE IN INCHES THIRD ANGLE PROJECTION		PROJECT TITLE: Project Title
DEFAULT TOLERANCES: LINEAR: X. ± .25 X.X ± .1 X.XX ± .01 X.XXX ± .002		ANGULAR: X. ± 2 X.X ± 1 X.XX ± 0 30'		UNIVERSITY OF IDAHO ME DEPARTMENT
DESCRIPTION: Test print for indentation and detail		FILE NAME/PART NUMBER: SP-00_ITP		SHEET: 1 OF 1 SCALE: 1:2
				REVISION: A