

Belgium Heritage Rose Conference

Feb 5th 2023

A GREAT TAXONOMIST AND THE WORLD'S LARGEST ROSE A MAGICAL INTERACTION AND WHAT FOLLOWS THEREAFTER

A Great Taxonomist and the World's Largest Rose
A Magical Interaction
And What Follows Thereafter



Whatever the case, General Collett's discovery is worth bringing to the attention of scientists and rose fanciers (amateurs). If any one succeeds in introducing *R. gigantea* into Europe, and in growing it will enrich choice collections by its enormous corolla and beautiful foliage; moreover it will be, by crossing it with other species, the source, of hybrid products probably superior to those of *R. indica*. "

Quoiqu'il en soit, la découverte de M. le général Collett est digne d'attirer l'attention des savants et des amateurs de Roses. Si l'on parvient à introduire et à cultiver en Europe le *R. gigantea*, celui-ci enrichira les collections d'une forme splendide par son énorme corolle et son beau feuillage; il sera, en outre, par son croisement avec d'autres espèces, la source de produits hybrides probablement supérieurs à ceux du *R. indica*.

One of the most dramatic periods in rose taxonomy began on 2nd June 1888 when Monsieur Francois Crepin, the leading rose taxonomist of his time, received a parcel from Mr David Prain, Conservator of the Sibpur Botanical garden, near Calcutta in India.

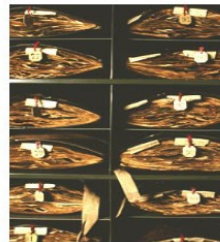
M.Crepin and His Herbarium



Francois Crepin
1830-1903

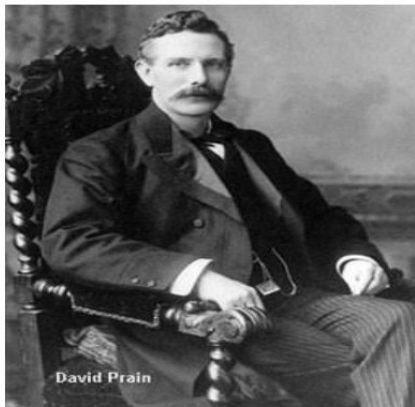


The Herbarium, Meise



Herbarium Sheets

David Prain and Calcutta Botanical Garden



David Prain
1857-1944



The Sibpur Botanical Garden Calcutta
Called The Royal Botanical Garden
Main Gate

The parcel contained specimens of a new rose species, collected by General Sir Henry Collett of British Indian Army, in the Shan Hills of Upper Burma (Myanmar now).

Henry Collett and *R. aigaantea*

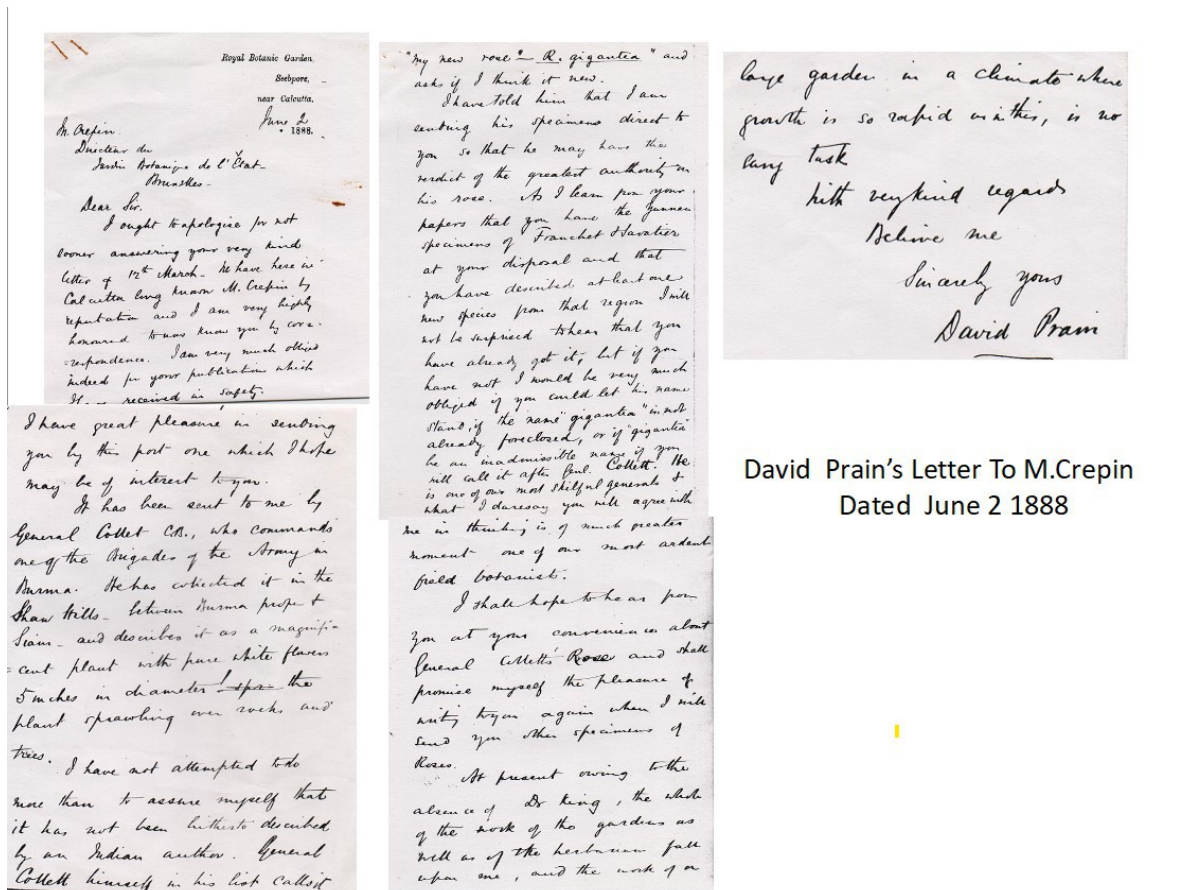


General Sir Henry Collett
1836 – 1901



R. gigantea

In the accompanying letter Mr Prain elaborated that General Collett had described this rose species 'as a magnificent species, sprawling over rocks and climbing into trees and having a pure white flower, 5 inches in diameter'. (based on the report by Francois Crepin entitled 'Description of a New Asiatic Rose' dated 2nd July 1888, Session of the Royal Belgian Society of Botany Bulletin, Vol XXVII 2nd part).



In the same Bulletin, M. Crepin concluded that the rose in question is 'unpublished and appears to constitute a distinct species', and he provisionally admits it as a '*Species - Rose gigantea, Collett*'. He says 'in my opinion it should be classified as being closely related to *Rosa indica*' and speculates whether it belongs to the section he himself had named '*Indicae*'.

We may add that Monsieur Crepin was not only a great taxonomist but unlike many of his tribe, he looked beyond taxonomy. When he stated, and I quote, 'whatever the case, General Collett's discovery is worth bringing to the attention of scientists and rose fanciers (amateurs). If anyone succeeds in introducing *gigantea* into Europe and in growing it, it will enrich choice collections by its enormous corolla and beautiful foliage; moreover, it will be, by crossing it with

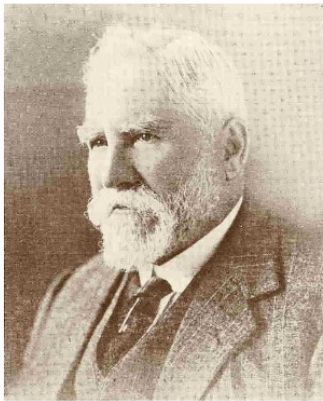
other species, the source of hybrid products, probably superior to those of *Rosa indica*'.

Sometime thereafter M. Crepin states, in the January 12th 1889 Session of the Royal Belgian Society of Botany Bulletin, that he had been able to examine some new materials that would allow him to complete the earlier description of *Rosa gigantea* Collett.

In summary, what has been written in this report is that M. Crepin had received a letter from General Collett himself wherein he had mentioned the villages in Myelet District where he had found *R. gigantea* at the latitude N.20.40 and longitude E.96.13, at an altitude between 4000 and 5000 feet (1200 -1500m). The rose was located in 14 or 15 different places in the district .An important observation made by the General is that where *Rosa gigantea* grows, frosts are almost unknown and that at least in Central Europe it should be grown protected from winter frost, indeed, well sheltered. The General also, in response to a query from M. Crepin, further clarified that the stems have prickles and that the inflorescences are uniflorous, but that he was unable to confirm that this was always the case.

We now turn to the form of *R. gigantea* found by G. Watt (Sir George Watt), of which 6 specimens had been sent to M. Crepin from the Berlin Botanical Museum. These had been collected in Khonghui on Mount Sirohi in what is now Manipur State in north east India, at an altitude of 6000 feet (1800 m.) in April 1882.

Sir George Watt and his *Rosa gigantea* Specimens



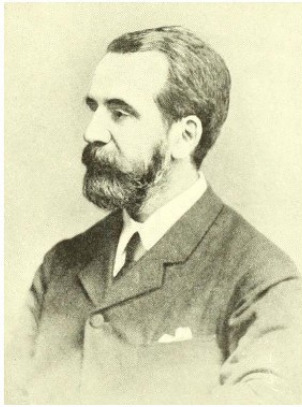
Sir George Watt
1831-1930



Herbarium Specimens

Thereafter Crepin contacted the Kew Herbarium, London, and he was informed that Kew's collections included 2 herbarium sheets of the same kind, one labelled April 17th 1882 at Khonghui, and the other labelled April 11th 1882 at Sirohfurar, at 6000 feet. The discoverer, G. Watt, had suggested the name *Rosa macrocarpa*. One of the inflorescences from Khonghui was triflorous, the others uniflorous. The Sirohifurar specimens were all uniflorous. Crepin agrees that the name 'macrocrpa' was perhaps justified by the species fruit size and he got confirmation from Mr M.G. King, the Director of the Calcutta Botanic Garden who had sent him two mature *R. gigantea* fruits which were big, pyriform, about as wide as long, 23-24mm.

George King , *R.gigantea* Hips



George King
1840-1909
Director Royal Botanical Garden
Calcutta



R. gigantea hips



R.gigantea hips in comparison
to garden peas

We omit further details but conclude this part with M. Crepin's observation that Watt's discovery considerably widens *R. gigantea*'s dispersion area from a location 5° North from Burma's Shan Hills to the west, in India. Crepin adds that perhaps this 'remarkable' species spreads east to south western Chinese provinces.

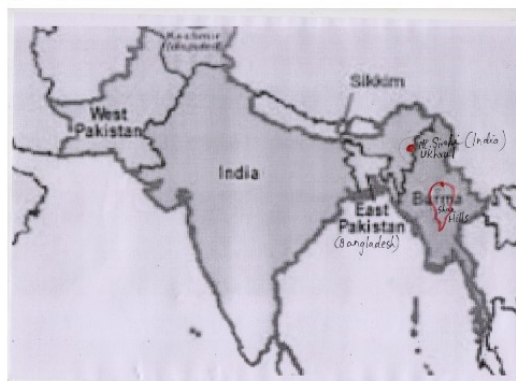
We may add that when we explored the same area in Manipur in January 1991, it was peak winter. We reached the same spot as George Watt may have done, after driving in a jeep up a forest road to some distance, and then trekking further, reaching the spot at mid day, but as it was clearly a much colder location, than the ones in the Shan Hills Burma, as accumulated frost had hardened to blocks of ice We saw specimens of the species clambering the forest trees well over 15 metres high and supported by the tree trunks.

The obvious question which arises is whether the two collections of *R. gigantea* in Upper Burma and in north east India are the same species or are they genetically different. It is pertinent to note that the Shan Hills are geologically considered to be an extension of the Himalayan range. If we bear this in mind it would be logical to assume that the two forms of *gigantea* are merely 2 different eco-types, the Burmese form representing the species as found in a cool

***R.gigantea* habitat**



Sirohi forest near Ukhrul town Manipur State



Sirohi Lily- *Lilium mackliniae*



R. gigantea climbing tree

climate without frosts and the Indian form representing the kind found in a cool climate with moderate frosts.

It should also be noted that 'Sir George Watt was the first discoverer of this species in Manipur in 1882, but the name *R. gigantea* was first published by Sir Henry Collett who found the plant in the Shan Hills in 1888' (Gardener's Chronicle, March 4th 1905).

The Gardener's Chronicle March 4th 1905

136

THE GARDENERS' CHRONICLE.

MARCH 4, 1905.

APPOINTMENTS FOR THE ENSUING WEEK.
SATURDAY, MARCH 4.—10.30 a.m. Flower Show at the Crystal Palace, London.
MONDAY, MARCH 6.—10.30 a.m. Flower Show at the Crystal Palace, London.
TUESDAY, MARCH 7.—10.30 a.m. Flower Show at the Crystal Palace, London.
WEDNESDAY, MARCH 8.—10.30 a.m. Flower Show at the Crystal Palace, London.
THURSDAY, MARCH 9.—10.30 a.m. Flower Show at the Crystal Palace, London.
FRIDAY, MARCH 10.—10.30 a.m. Flower Show at the Crystal Palace, London.
SATURDAY, MARCH 11.—10.30 a.m. Flower Show at the Crystal Palace, London.
SUNDAY, MARCH 12.—10.30 a.m. Flower Show at the Crystal Palace, London.

SALES FOR THE WEEK.
MONDAY, MARCH 6.—10.30 a.m. Flower Show at the Crystal Palace, London.
TUESDAY, MARCH 7.—10.30 a.m. Flower Show at the Crystal Palace, London.
WEDNESDAY, MARCH 8.—10.30 a.m. Flower Show at the Crystal Palace, London.
THURSDAY, MARCH 9.—10.30 a.m. Flower Show at the Crystal Palace, London.
FRIDAY, MARCH 10.—10.30 a.m. Flower Show at the Crystal Palace, London.
SATURDAY, MARCH 11.—10.30 a.m. Flower Show at the Crystal Palace, London.
SUNDAY, MARCH 12.—10.30 a.m. Flower Show at the Crystal Palace, London.

THE GARDENERS' CHRONICLE.
MARCH 4, 1905.
The colour of the flowers exhibited was very white, and the foliage showed one more pair of leaflets to each leaf than is represented in our illustration. A good flower is given in the *Botanical Magazine*, 1872 (November, 1872), where the flowers are shown of a pale primrose-yellow colour, whilst the bud has the golden colour mentioned in Lord Swinburn's description. There is no doubt whatever from the glowing descriptions given by travellers, and such evidence as we now have, that this is indeed a grand rose and amply deserved the award made it. In due time we doubt not we shall discover some means of inducing the plant to flower more freely. Up to the present, as Mr. Hensley says, "every possible method of propagation has been tried ineffectually in this country, yet it flowers profusely on the Riviera."
Sir George Watt was the first to discover this rose (in Manipur), but the name *R. gigantea* was first published by the late Sir Henry Collett, who found the plant in the Shan Hills, Upper Burma. More recently it has been found in South-Western China by Dr. Hensley and others. We now therefore expect considerable variation, whilst the colour of the flowers, about which there has been a diversity of statement, would naturally differ according to varying conditions and diverse stages of growth. Sir George Watt mentions that the fruit is edible, as large as a small apple, and that it is sold in the bazars of Manipur State.
Mr. Fiebigler, in our own columns, May 2, 1903, p. 275, mentions the species as hardy in South Devon, and we have heard it is grown on an outside wall at Reigate, Surrey.
RHODODENDRONS AT SINGLETON, NEAR SWANSEA, AND AT PENLARGAER.—Some fine specimens of Himalayan Rhododendrons may be seen in the Singleton Arboretum, belonging to Lord Swinburn. The specimen shown in fig. 27 is a natural hybrid between *R. Edmonstonei* and *R. nivium*, raised from seed sent to Singleton by Colonel Sykes, who commenced his expedition to the Himalayas in about the year 1855. The tree is 50 feet high, and 20 feet in diameter across the branches. At the time of our photograph was taken the plant had 300 buds of flowers, which in size are very similar to those of *R. Edmonstonei*, but they are tinged with blue colour when they first open, passing afterwards to white or nearly white. Mr. James Hanks, whose photograph appears in the illustration, was gardener at Singleton for many years, and has now a nursery at Bideford in the immediate neighbourhood. Among the most notable Rhododendrons at Singleton is *R. bar-*

batum, 35 feet high and 15 feet through. The tree is wonderful and its effect handsome, even in winter, but when in flower the sight must be worth a long journey to see. It generally produces about 100 heads of flowers. Of *R. Edmonstonei* there is one specimen 25 feet high and 12 feet through, which has produced on one or two occasions as many as 200 heads of flowers. We had the pleasure of visiting Singleton in January and there, amongst other Rhododendrons, we saw a large specimen of *R. barbatum* and other species, being so handsome that the absence of flowers was of its consequence than one would have expected. The garden at Singleton at Singleton, which contains many fine specimens, including *Tunga Martiana*, *Abutilon*, *110 feet high*, Lord Swinburn having resided there for the past three years. Singleton is only inhabited by a few people, but we are glad to find that although little building is done and such like work is done in the garden, the trees are looked after by Mr. Hanks, who is well retained for this purpose by Lord Swinburn. The extraordinary climate at Singleton is shown by the fact that we were able to gather beautiful flowers of *Cereus peruvianus* on January 11 from a plant growing on the Celtic walls exposed to the weather. From Singleton we drove to Penlargaer, the residence of Sir John T. Llewellyn, Bt. In the beautiful and extensive garden there Sir John has an exceedingly rich collection of Rhododendrons, including most of the Himalayan species that are hardy in South Wales. Five natural indications of Colledge's the genuine lake and other features, as remarkable, and the spot is an ideal one for the cultivation of Rhododendrons and Bamboos, what Sir John has made his special favourite. The magnificent Bamboos are a revelation to those who have never seen the effect they are capable of producing in favourable localities, when sown in view to the collection of position in which the plants will have the benefit of shelter. Sir John's collection of Rhododendrons has been at the place so long, he has seen most of the finer plants grow up, and can easily share the satisfaction his employee has for their cultivation.

ROYAL HORTICULTURAL SOCIETY'S EXAMINATIONS FOR SCHOOL TEACHERS, 1905.—The Royal Horticultural Society will hold an examination in Cottage and Allotment Gardening on Wednesday, April 5, 1905. This examination is intended for, and will be confined to, Elementary and Technical School Teachers. The general conduct of the examination will be on the same lines as that of the more general examination, except in obvious points in which they would not apply. Pre-reading candidates are requested to send in their names early in March, a certificate giving the highest number of marks, and each candidate will receive a Certificate of the class in which he has passed.

GRADUATE EXAMINATION.—The Society's Annual Examination in the Principles and Practice of Horticulture will be held on Wednesday, April 12, 1905. The examination will cover both examinations will be sent to any person on receipt of a stamped and directed envelope. Questions set at the Royal Horticultural Society's Examinations, 1904-1905, may also be obtained at the Society's Office, Vincent Square, Westminster, price 1s. 6d.

UNITED HORTICULTURAL BENEFIT AND PROGRESS SOCIETY.—The annual general meeting of this Society will be held at the Calverley Hotel, Adelphi Terrace, Strand, W.C., on Monday, March 13, 1905, at 4 p.m. Mr. W. F. Ward will preside.

For those who are interested, in the Crepin Herbarium, here in Meise, there are several specimens of the rose to be seen.

The Meise Herbarium

Herbarium Sheets of Rosa gigantea in The National Botanic Garden, Meise, Belgium

1st sheet : 'The original Collett specimen 1888, collected in the Shan Hills between Burma and Siam

2nd sheet: '*Rosa khongui* (?) Munipur. 6000 feet. April 1882. Collected by G.Watt

3rd sheet: Abbe Delavayi found *R. gigantea* in Yunnan. 1890 March. Pinkish white.



Bust of Crepin



Viru and Ivan Louette in the Crepin Herbarium 25th June 2003

1st sheet : 'The original Collett specimen 1888, collected in the Shan Hills between Burma and Siam(now Thailand)

2nd sheet: '*Rosa khongui*' (?) Munipur 6000 feet. April 1882. Collected by G.Watt'

3rd sheet: Abbe Delavayi found *R. gigantea* in Yunnan, China. 1890 March. Pinkish white.

We must mention that we got the photocopies of these articles from the Archives of the NBG Library here in Meise, when we visited in 2003, with our friend Ivan Louette , and because of whom, we had

access to the herbarium to view the sheets and to request for all articles on *R. gigantea* in the Library

We now take up the flowering of this great rose species in Europe. The material is based on two articles in the English garden journal, The Gardeners Chronicle, dated March 4th 1905 (we showed the slide earlier) and May 11th 1912.

The Gardener's Chronicle 1912

314 THE GARDENERS' CHRONICLE. [PAGE 11, 1912.]

ROSA GIGANTEA.

THE flowering of this remarkable Rose at Kew in the spring of 1910 (see *Gardeners' Chronicle* June 4, 1910, p. 370) was an event which had been looked forward to ever since its introduction into cultivation by General Sir Henry Collett in 1889. At the present time it is again in flower in the Himalayan wing of the Temperate House, where it is planted out in a border amongst Himalayan and other tender Rhododendrons, and has climbed high up amongst the rafters and

yellow. The calyx lobes measure an inch in length, but there are specimens in the Kew Herbarium in which the lobes are even longer than this. A remarkable feature of the plant is its extraordinary vigour and the enormous amount of growth which it has made in former years. Some of the original seedlings raised from seed collected by General Collett in the Shan States were planted in several of the large houses at Kew in borders of prepared soil, and quickly made large specimens. Some of the shoots grew as much as 20 feet long. A large

plant of this Himalayan wing, was well known to cause the plants to continue in growth for years round, but in the Himalayan wing the plant obtained a rest of a few months in winter. The temperature of this house is not allowed to fall more than a few degrees below freezing point. When originally planted in the house in 1889 the plant grew rapidly in the soft loamy soil of the border. The soil, however, did not suit many of the other rose-garden roses, and in 1900 it was replaced with a soil of peat. This has had a marked effect upon the

rate of growth of the Rose, the stems being much more slender and the growth has been more accurately. It is to the change of soil that we attribute the flowering of the Rose in 1910. The last summer it had produced only a few flowers, but last year after the wet and cold summer of 1910, California would do well to try the effect of planting this Rose in a border of soil where the roots may be exposed. They should also try the effect of a low temperature during the winter.




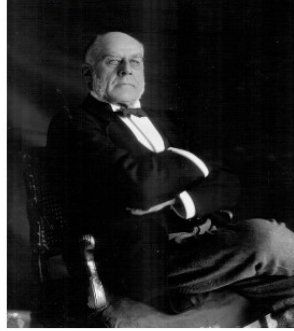
FIG. 156.—ROSA GIGANTEA, FROM A PLANT IN BLOOM IN Kew HERBARIUM. FLOWERS CUPPELY-RED, FADED TO WHITE.

from gardens of the roof to a height of about 40 feet. At such a distance from the ground the beauty of its flowers cannot be perceived, but a flower, which are from 4 to 5 inches in diameter, colour is a rich copper, similar to W. Alfred. As the bloom expands, however, fading rapidly as the bloom expands until when it has been open a day or two, the colour becomes more white. The stems are a bright

specimen was grown for 10 years or so in the Temperate House, where it grew vigorously. During the summer and autumn the leaves on the roof were let down and the plant exposed to all the sun and light possible, being afterwards tied down close to the glass and subjected to the dry conditions of the glass house or the house during the winter. Other specimens were grown in the main building of the Temperate House as well as in the Mexican and Himalayan wings. The temperature of each of the houses except

The seeds of the species were first received in England in 1889 from Sir George King, then Director of the Calcutta Botanical Garden. Attempts by well known rosarians, including that great nurseryman George Paul and Mr Leach, gardener to the Duke of Northumberland, to raise seedlings did not succeed. But eventually, in 1898 Lord Brougham had the satisfaction of flowering plants in his garden in Cannes, France.

Lord Brougham ----- Villa Eleanore



Henry Brougham, 3rd Baron Brougham and Vaux



Villa Eleanore

'In his list of roses now in cultivation at the Chateau Eleanore at Cannes 'published in 1898, his Lordship mentions the plant as 'having flowered in his garden for the first time in Europe last month' (April 1898 presumably). Strictly speaking, this is incorrect as the species flowered in the Lisbon Botanic Garden in 1896.

He - Lord Brougham - gives an elaborate description and calls it 'a splendid plant making growth of 40 feet or more, the most desirable and by far the finest single rose I have ever seen. The bud is long but very closely resembles that of 'Madame Marie Lavalle' and of a pure gold colour but the sun soon extracts the gold from the bloom'.

Duke of Northumberland – Albury Park



THE DUKE OF NORTHUMBERLAND.
(From a Photograph by J. Roberts, Albury.)
The 7th Duke of Northumberland,
Henry George Percy, 1846-1918



Albury Park

Mr Leach, gardener to the Duke of Northumberland in Albury Surrey England, succeeded in 1903 in inducing the plant under cultivation in the Duke's garden, to produce 2 flowers which were 6 inches across. This was the first flowering of the species in Britain. In February 1904 the same specimen produced about a dozen flowers and in 1905 Mr Leach had the satisfaction of seeing 28 blooms on his plant, some of which were exhibited at the Royal Horticultural Society's Show and secured for the exhibitor the Award of Cultural Commendation' and a botanical certificate. Mr Leach cultivated the plant in the Peach House of the duke's estate. The exhibited flowers were ivory white. Thereafter the rose flowered in RBG Kew, London in 1910 and again repeated in 1912. There is a detailed description of the way in which the plant was trained in the Temperate House at Kew in the Gardener's Chronicle issue of May 11th 1912 from which we can gather the difficulties encountered in growing and inducing flowering under English conditions of our Himalayan rose.

R. gigantea in Spain - Parson's Painting



We now take up the work of rose breeders in Europe to produce new kinds starting with the species. The focus of almost all these early work was creating plants which would flower early in the year in areas such as Southern France, Italy and Portugal. In those days before the First World War, rich landowners in the colder parts of Europe, particularly Britain and northern France, had acquired vast properties where the climate was more benign in winter. They would shift their establishments to these houses and gardens, and naturally they expected to see flowers. *Rosa gigantea* hybrids were admirably suited for this purpose as they flowered early in the year.

Cayeux, Busby, Nabonnand



Belle Portugaise
Cayeux 1905



Etoile du Portugal
Cayeux 1898



La Follette
Busby c.1910



Emanuella de Mouchy
Paul Nabonnand 1922

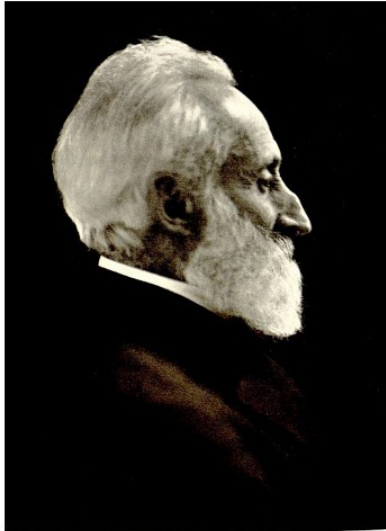


Senateur Amic,
Paul Nabonnand, 1924

All photographs , courtesy John and Becky Hook

I show you some of these hybrids bred by Henri Cayeux, P. Nabonnand, Busby (Lord Brougham's gardener) and others in Europe. Unfortunately, the incentive to breed such roses was taken away when the life style of the rich altered dramatically after the First World War and later, by the Great Depression of the 1930s. These early hybrids were probably bred using the Collett form of *Rosa gigantea*, but as this work stopped abruptly, whatever was bred were first generation F1 hybrids. If only the work had continued to the next generation we would have seen even more spectacular varieties, because of the combination of genes which happen in the F2 generation and beyond.

Francesco Francheschi- USA- “Montecito”



Dr. Francesco Francheschi
1843-1924



Montecito
Courtesy Maddalena Piccinini

As far as we can verify, the only early hybrid raised from the Watt form of *gigantea* is the interspecies hybrid, 'Montecito', raised by Dr Francesco Francheschi.

Work with *R. gigantea* however started in an entirely different continent, in Australia, where the great breeder, Alister Clark raised many beautiful hybrids and some of these can still be seen in the Clark Memorial Garden at Bulla near Melbourne, and other gardens in Australia. One of his most popular *gigantea* hybrids was 'Lorraine Lee', so floriferous that on one occasion the entire fence of the Melbourne Race Course was decorated with flowers of this rose in a season when other roses were not available.

Alister Clark – Australia



Alister Clark
1864 - 1949



Nancy Hayward



Golden Vision

In the U.S. the pioneer was Reverend Georg Schoener, whose devotion and energy resulted in the introduction of numerous hybrid giganteas, but his efforts were almost completely destroyed, first by a fire, and second, by a great storm which decimated the spectacular avenue of hybrid giganteas planted by him on the streets of Santa Barbara in California.

Rev. Schoener-USA



Rev .Georg Schoener



Dwarf hybrid *gigantea*

Courtesy Santa Clara Univ.Archives & Spl Digital Collections

But the focus of this talk is somewhat naturally on the new hybrids raised by me in our garden in Kodaikanal, India . Kodaikanal is on a mountaintop on the Western Ghat mountains of southern India, at an altitude of 2200 m. It enjoys a tropical mountain climate, and is variously called 'the town of eternal spring' and 'an island in the sky'.

Many hybrids have been raised utilizing the form of *gigantea* from Mt. Sirohi in Manipur State in northeast India, the form collected by George Watt, and which is a different eco-type, geographically as mentioned earlier, at least marginally cold hardier. We had collected seed of the species on our expedition in 1991 and from the many seedlings raised, I began my work.

Two kinds of crosses were made, using *R. gigantea* as pollen parent. The first series was with the Noisette climber 'Reve d' Or', which does well in India.

(Reve d'Or x *R.gigantea*) climbers



Manipur Magic

Courtesy -Simona Garon, California



Sir George Watt



Tangkhul Treasure



Sir Henry Collett

Manipur Magic: *Rosa gigantea* was located in our ascent of Mount Sirohi in Manipur State. Hence the name.

Tangkhul Treasure: This has been named for the Tangkhul Nagas – a tribe dominant in Manipur State.

Sir George Watt: Named in tribute to the discoverer of *Rosa gigantea* in 1882

Sir Henry Collett :A general in the British India Army he discovered *R gigantea* in the Shan Hills of Burma (Myanmar)

Another approach was a leap in the dark. We had noticed that the French Hybrid Tea 'Carmosine' , with large petaled blooms of pink and orange red, was well adapted to our climate, so crosses were made, and despite 'Carmosine' likely being a tetraploid, and *gigantea* a diploid, we got some seedlings - this was a great step forward.

(Carmosine x *R.gigantea*) climbers



Maebara's Dream in the Sakura garden, Japan



Evergreen Gene



Frank Kingdon Ward

Maebara's Dream: Mr Maebara, who is happily with us today, Is Curator of the Sakura Rose Garden and this rose honours him.

Evergreen Gene : Our roses were popularized in the U.S. through the untiring efforts of Gene Waring, who underlined the need for evergreen foliage for warm climate roses.

Frank Kingdon Ward: This rose commemorates the great plant explorer, Kingdon Ward who discovered *R. gigantea* in the 1940s on Mt. Sirohi in Manipur State

Some other climbers with *R.gigantea*

Some Other *R.gigantea* climbers



Golden Threshold , Serbia



Amber Cloud
with Nicoletta Campanella, Italy



Mia Grondahl

Golden Threshold: This arch of gold shows the expertise of Radoslav Petrovic of Serbia.

Amber Cloud: A lavish display of this rose in Nicoletta's garden in Italy

Mia Grondahl : The infectious enthusiasm of Mia Grondal is reflected in the ardent colours of this rose.

Some Other *R.gigantea* climbers



Sakura Sunset in the Sakura Garden



Rebecca's Choice



Karrie's Rose



Nobuo Shirasuna, Landscaper Supreme

Sakura Sunset: This lovely pink rose is our tribute to the Sakura Rose Garden

Rebecca's Choice: Rebecca and John Hook, well known heritage and especially Tea rose experts, visited us and Becky liked this climbing rose, which we named for her.

Karrie's Rose: The beautifully landscaped garden of Club Continental Resort in Florida is the result of Karrie Massee, the owner's , fascination for roses and so this is named for her.

Nobuo Shirasuna Landscaper Supreme: Undoubtedly one of the leading landscape architects of our time, this is our way of paying him tribute.

Some Other *R.gigantea* climbers



Ivory Chalice

Lady Jane Hooker



Our new seedling

Lady Jane Hooker: Named as desired by Lady Jane Barran, a niece of the great plant explorer J D Hooker

Ivory Chalice: The French rose Reve d'Or married to Rosa gigantean produced this beauty

Fire in Spring: The mesmerising colours of this climbing rose explain why we call our book 'Roses in the Fire of Spring'

I show now some of the shrubs we have bred with *R. gigantea*

R.gigantea shrubs



Helga's Quest



Naga Belle



Sirohi Sunrise



Remembering Nico

Helga's Quest : The vivacious charm of our friend Helga Brichet is sought to be captured in these dazzling colours

Naga Belle : This is named to reflect the beauty of the women of the Naga tribe who lived in Manipur State.

Remembering Nico:Named in memory of Nicholas van Damme, young nephew of a good friend who gardens near us on our hills.

Sirohi Sunrise: The exciting colours of this rose remind us of the fascination of our expedition to Mt Sirohi to look for *Rosa gigantea*

R.gigantea shrubs



Dr. Malcolm Manners



Allegory of Spring



Kindly Light



Agnimitra

Dr Malcolm Manners: Dr Manners who is with us today, represents an unique combination of expertise in horticultural science and mastery in rose growing.

Allegory of Spring: We were enraptured by the Botticelli masterpiece Allegory of Spring. Hence the name.

Kindly Light: The name is inspired by the well known hymn, Lead Kindly Light.

Agnimitra: Translated as Friend of Fire, Agnimitra was a great king of ancient India

Some Other *R.gigantea* shrubs



Alister's Gift



Remembering Cochet
Courtesy Malcolm
Manners



Lanjique Rose



Maria Cecilia Freeman

Courtesy Sergio Scudou



Out of India

Courtesy Malcolm Manners

Some Other *R.gigantea* shrubs



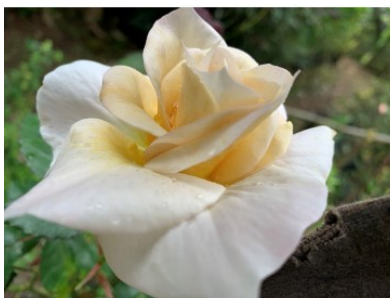
Wine Dark Sea



Sheenagh Harris



Kusabue's Guardian Angels



Momoko's Magic Touch



Jay Hiers

While creating these gigantea climbers and shrubs, an interesting spin off was the appearance of several seedlings with typical Tea rose characteristics. In retrospect, it is easy to see that this is what should have been expected, as *R. gigantea* is present in the background of standard Tea roses along with *R. chinensis spontanea*. Our new Tea roses have inherited, in many cases, the more robust growth of *R. gigantea*, as well as the disease resistance of the species. As contrasted with the earlier Teas, these have benefitted by *R. gigantea* being much more prominent in the breeding line.

Some of Our Tea Roses



Faith Whittlesey

Courtesy Maurizio Usai, Sardinia



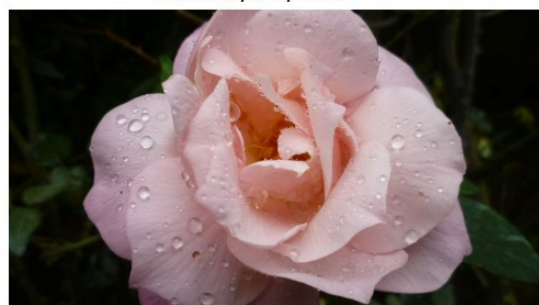
Aussie Sixer

Courtesy Billy West



Maura la Cava

Courtesy Vincenzo Lazieri



Lotus Born

Two new Tea Rose seedlings



Faith Whittlesey x Maura la Cava



Reve d'Or x Aussie Sixer

In conclusion, we have been able to partially realize M. Crepin's dream of creating new roses utilizing *Rosa gigantea*. What of the future? As some of you may know, we have been working with a separate line based on *Rosa clinophylla*, probably the world's only really tropical rose species. We would like to inter-cross the two lines to create really warm climate roses, a project which, we would like to think, would have appealed to M. Crepin, as he had written extensively on this species too.